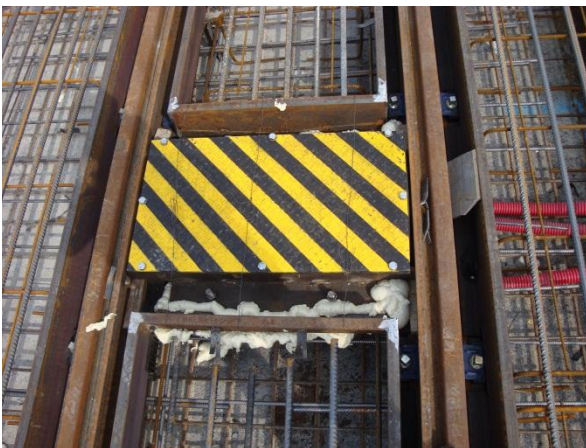


### CASE STUDY: WORM AND WIM - BRABO I SOUTH

Customer	Frateur de Pourcq (FDP), Antwerpen
Location	Antwerpen, Belgium
Duration	2011-...
Application domain	DBFM tramline extension project

Within the Brabo I project a tramline extension was realised between Mortsel and Boechout and between Deurne and Wijnegem (Antwerp). Since the project was a DBFM contract, the contractor is responsible for the track maintenance over a period of 30 years after completion of the construction works. In order to do so, the contractor installed a WORM system for vehicle wheel flat and out of roundness detection combined with a WIM system for vehicle weighing. The systems are used to verify if the dynamic load of the tram vehicles running on the track do not exceed contractual limits asked of the tram operator. Also, the systems prevent defected wheel sets to damage the tracks.



#### Contact

APT

[www.aptrail.com](http://www.aptrail.com)

Troonstraat 98  
B – 1050 Brussels  
Belgium

E-mail [info@aptrail.com](mailto:info@aptrail.com)

T. +32-(0)16-23 20 40  
F. +32-(0)16-23 89 10